



TABLE OF CONTENTS

COMMUNITY DESCRIPTION 1

RECREATION PROGRAM IN GREEN LAKE TOWNSHIP 3

- ADMINISTRATIVE STRUCTURE 5
- RECREATION BUDGET 7

RECREATION INVENTORY 8

DESCRIPTION OF THE PLANNING AND PUBLIC INPUT PROCESS

- PLANNING PROCESS 15
- PUBLIC INPUT 16
- SUMMARY OF QUESTIONNAIRE RESULTS..... 17

GOALS..... 22

ACTION PROGRAM..... 23

APPENDICES

- LOCATION MAPS FOR RECREATION FACILITIES
- ADDITIONAL COMMENTS FROM EXPANDED QUESTIONNAIRE
- COPIES OF TRANSMITTALS
- COPY OF NOTICES
- COPY OF SIGNED RESOLUTION OF ADOPTION
- COPY OF MINUTES OF TOWNSHIP BOARD MEETING ADOPTING PLAN
- COPY OF SURVEY FORMS



COMMUNITY DESCRIPTION

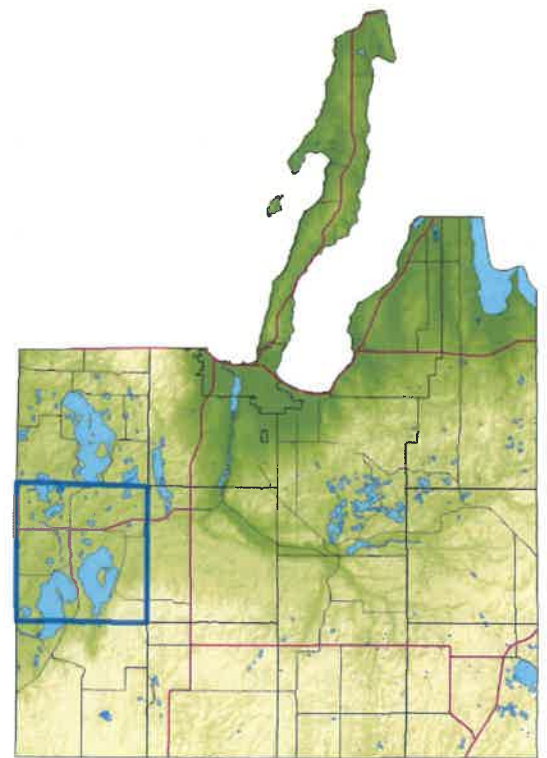
This Recreation Plan was prepared for Green Lake Township, Grand Traverse County which is located in Michigan’s northwest Lower Peninsula. Green Lake Township is situated on the west side of Grand Traverse County.

US 31 is a significant east-west corridor crossing Green Lake Township and connecting it to Benzie County to the west and, via US 37, to Traverse City to the northeast. The Township includes the unincorporated Village of Interlochen. The village area is centrally located and, along with the M-137 corridor, is the governmental, retail, and recreational center for the township. The residential areas of the village are relatively densely developed. Most of the other residential development in the Township is found along the many miles of lakefront or in subdivided land west of the Betsie River basin or just northwest of the Interlochen Village area.

Providing recreational opportunities for these residences, and linking to the village’s activity centers with non-motorized trails is an important element of the Township’s recreational planning. Along with the Interlochen village commercial center, some of these activity centers include the Interlochen Center for the Arts campus, Interlochen State Park, and Green Lake Township’s Memorial Park. The Township has put a concerted effort toward creating a strong retail and community center in Interlochen. Part of this effort is to establish Interlochen as a walkable destination for shopping; visiting public offices such as the Interlochen Library, the Interlochen post office, or the Green Lake Township Hall; institutions such as churches; and eventually, as the location of recreation links such as trails and parks.



Map 1 Location Map
Green Lake Township Recreation Plan

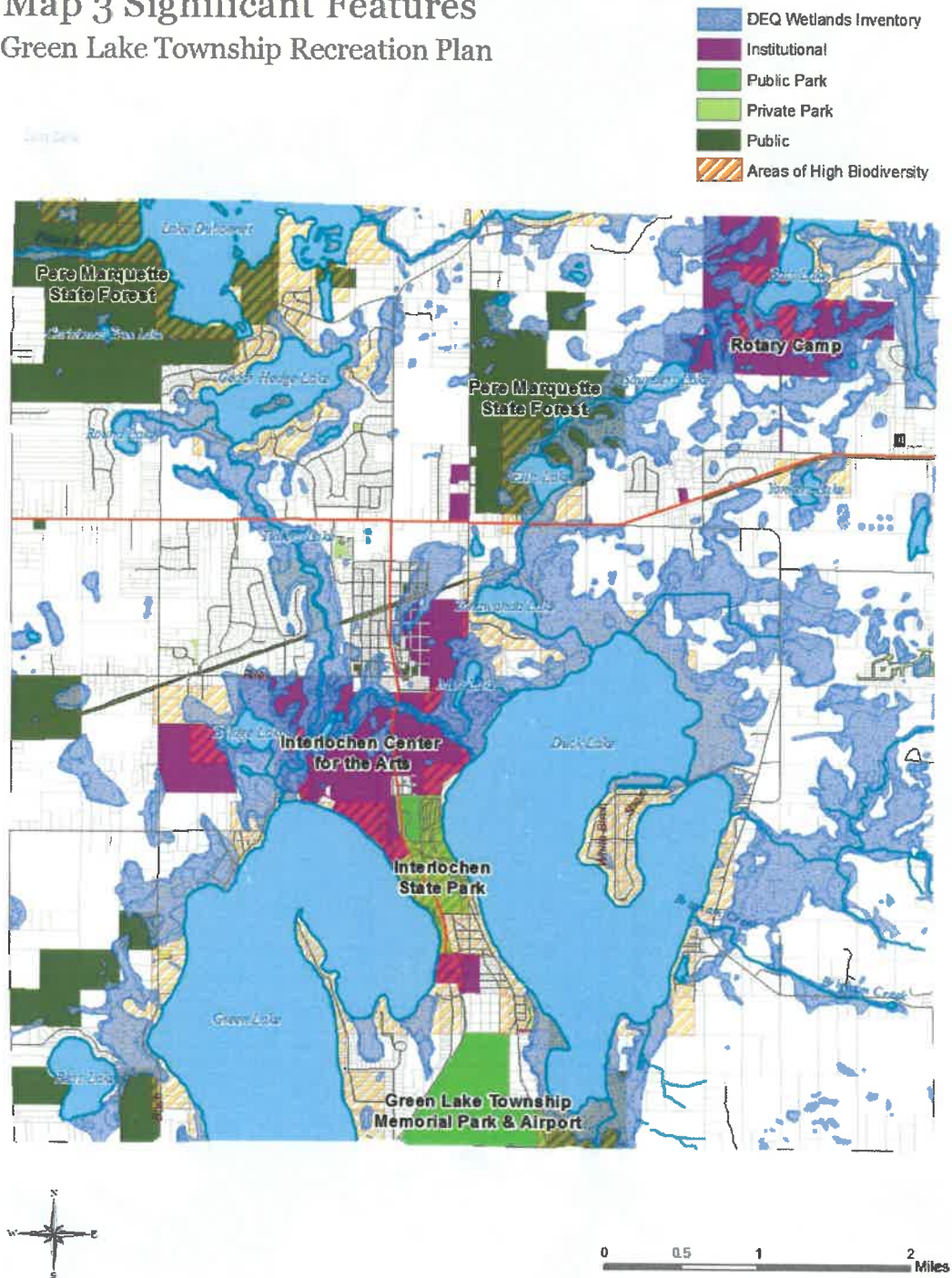


Map 2 Grand Traverse County Topography
Green Lake Township Recreation Plan



Green Lake Township includes parts of three large lakes; Duck Lake, Long Lake, and Green Lake and several small lakes including Lake Dubonnet, Tonawanda Lake, Cedar Hedge, and Bass Lake. The Township also includes a large inventory of wetlands and other fragile areas. The area between

Map 3 Significant Features Green Lake Township Recreation Plan





and surrounding Duck and Green Lakes and along the Betsie River are areas where wetlands are especially prevalent. These are areas characterized by significant woodlands and recreation areas as well. Retaining and enhancing access to these water resources is an important component of the Township's recreation goals.

The Township has a history as a seasonal second home community. In addition, the Township has a large visitor and tourist population due to its lakefronts, seasonal events and visitors to the Interlochen Center for the Arts, and other state and local parks located throughout the Township.

The 2010 Census reported that Green Lake Township had 5,784 residents. The American Fact Finder estimates that Green Lake Township had a population of 5,947 by 2014. Together with the adjacent Grand Traverse townships of Long Lake, Grant, and Blair, the area had 23,721 in population in 2010 and an estimated 24,493 in 2014; the County overall had a population of 86,986 in 2010 and an estimated 88,981 in 2014. Green Lake Township, along with Long Lake and Blair Townships grew at a substantially higher rate than the county overall over this time period.

Since 2010, Green Lake Township and neighboring its neighbors Blair and Long Lake Townships have trended toward a younger population with a lower median age. Green Lake's median age was estimated to be 35.1 in 2014 (down from 38.3 in 2009). The County overall has trended older during this time period from an estimated median age of 40.5 in 2009 and 41.5 in 2014. The Township has a younger population than the County overall and includes a substantial percentage of young families as well as a sizable population 60 and over. Therefore, recreation planning for the township must be responsive to all age groups.

The elected Township Board is responsible for recreation planning. The Township Board works with a committee of citizen volunteers that serve in an advisory capacity on recreation related issues. The Parks and Recreation Committee meets as needed throughout the year to make recommendations that are ultimately carried out by the Township Board.

The focus of this Plan is to provide a roadmap for providing a range of recreational opportunities for the residents and visitors of Green Lake Township. The recreation goals, and related objectives and strategies identified in the Township's Master Land Use Plan are as follows:



Goal: Provide for a range of recreational facilities to promote healthy lifestyles and access to natural areas for the Green Lake Township community.

Objectives:

- ❖ Provide local and regional multi-use pathways in areas that will serve local residents and provide access for regional recreational visitors.
- ❖ Further develop existing and new recreation facilities to serve the Green Lake Township community.

Strategies:

- ❖ In cooperation with the Recreation committee, maintain an updated Recreation Plan for the Township.
- ❖ With new development, require through zoning standards set-aside of easements for regional multi-use pathways in locations consistent with regional trail plans.
- ❖ In locations consistent with local recreation planning, require development of integrated trail systems with new residential development.
- ❖ Where opportunities exist, work with the regional land conservancy and similar groups to secure the permanent protection of important natural areas on an on-going basis.
- ❖ Work cooperatively with the Interlochen Improvement District Authority, the Recreation Committee, and the Planning Commission to identify areas for small parks within the village area, plan for a means to acquire, develop, and maintain these parks consistent with the IIDA's development and streetscape plans.

The Parks and Recreation Committee, and ultimately, the Township Board included consideration of these goals, objectives, and strategies during the development of this Plan.



RECREATION PROGRAM IN GREEN LAKE TOWNSHIP

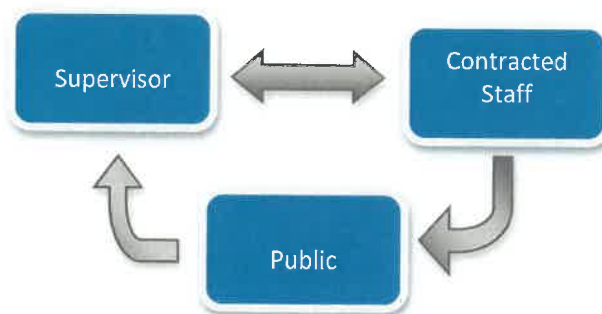
Administrative Structure

The primary responsibility for administering the Parks and Recreation system in Green Lake Township rests with the Township Board of Trustees, the elected legislative body of the Township. (PA 157 of 1905) The Township Board works with a committee of citizen volunteers that serve in an advisory capacity on recreation related issues. This is the Parks and Recreation Committee.

The Parks and Recreation Committee meets as needed throughout the year to make recommendations that are ultimately carried out by the Township Board. The Supervisor of the Board of Trustees is a member of the Parks and Recreation Committee and serves as a liaison between the two bodies. Currently, the Committee has 6 active members including the Township Supervisor and another member of the Township Board. The Committee receives staff support from the Township’s Planning and Zoning departments.

The Township Supervisor is also responsible for the day-to-day functioning of the parks and recreation system. Park maintenance issues are carried out on an as-needed basis, determined by the Supervisor, through the use of a variety of contracted maintenance service providers. The overall maintenance contract is bid out annually. Some seasonal maintenance projects are aided by volunteer organizations such as the ball leagues. Green Lake Township also engages a part-time director to coordinate its men’s, co-ed, and youth softball leagues.

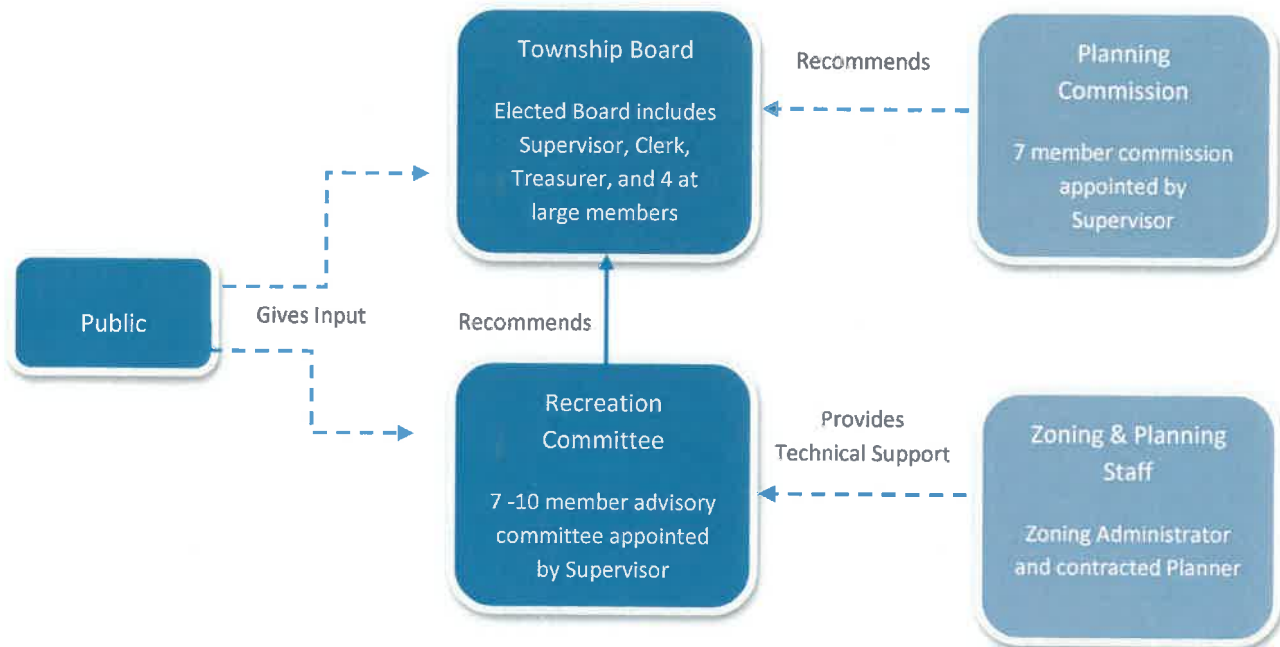
RECREATION ADMINISTRATION GREEN LAKE TOWNSHIP





RECREATION PLAN CREATION PROCESS
GREEN LAKE TOWNSHIP

Adopts Plan



Green Lake Township has also cooperated with various formal and informal trail associations such as the Traverse Area Regional Trail (TART) association in regional efforts to plan for and provide for regional trailways.

Green Lake Township has successfully operated its parks and recreation programs by working with and through the support of both public and private organizations such as the Township baseball league and the Traverse Radio Airplane Model Pilots’ Society. These groups are active with park clean-up, as well as providing events and programs for local youth. As a result, the Township has not had a need to establish a recreation department or employ a full-time recreation director.

The Traverse City Area Public Schools (TCAPS) has recently shuttered the Interlochen Elementary School located within the village of Interlochen. The Township is working with other districts and partners in order to maintain a community school in Interlochen. Shared recreation programming and facilities may become more important in regards to the community school in the future.



Recreation Budget

Funding for parks and recreation activities comes primarily from the Township general fund budget. Secondary funding sources may include grants, both public and private, and community donations of both money and in-kind labor. Funds from secondary sources have been traditionally tied to a specific project such as a playground structure or a park renovation. A general fund budget allocation funds day-to-day activities and maintenance.

The budget for fiscal year 2016/17 was adopted in July 2016. Total budgeted expenditure for recreation is \$_____. Funding for recreation in Green Lake Township comes from the Township’s general fund and from fees paid by participants in leagues. There is also a memorial fund of donations for specific park improvements not included in the below budget. The following table includes the budget breakdown.

Table 1 Green Lake Township Recreation Budget		
	2015/16 Actual Costs	2016/17 Budget
Salaries (including Social Security and Medicare)		
Maintenance		
Supplies		
Professional Services		
Membership and Dues		
Contracted Labor		
Transportation		
Printing & Publishing		
Insurance & Bonds		
Electricity		
Cellular phone		
Repairs & Maintenance		
Capital Expenditure		
Field Maintenance		
Total		



GREEN LAKE TOWNSHIP RECREATION PLAN 2017

RECREATION INVENTORY

Green Lake Township has an extensive inventory of recreation resources, both public and private. A summary of the inventory is illustrated in Table 2, shown below. The Map Key column refers to the numbers on Map 4, which follows the table. See the appendix for site maps for each facility. This survey was completed by Township staff and reviewed for accuracy and completeness by the Recreation Committee. Various sources were used to compile the inventory including public records, in person observations, and GIS mapping data.

Table 2

Recreation Inventory Summary, Green Lake Township

Facility Name	Map Key	Ownership	Size/ Acres	Description	Service Area	Access Rating
Cedar Hedge Lake Access	M1	Public/State	12	Restrooms, parking area (30 spaces), boat access	Statewide	1
Ellis Lake Access	M2	Public/State	1	Parking area (30 spaces), boat access	Statewide	1
Interlochen State Park/ Duck Lake Access	M3	Public/State	147	Restrooms, parking area, playground, pavilions, volleyball, picnic area, baseball/ softball, camping, swimming, fishing	Statewide	1
Interlochen State Park/ Green Lake Rustic Campground	M4	Public/State	35	Lake access, swimming beach, camping	Statewide	1
Lake Dubonnet Access	M5	Public/State	1	Parking area, boat access	Statewide	1



GREEN LAKE TOWNSHIP RECREATION PLAN 2017

Facility Name	Map Key	Ownership	Size/ Acres	Description	Service Area	Access Rating
Lake Dubonnet Campground	M6	Public/State	30	Rustic camping, fishing, boat launch	Statewide	1
Michigan Shore to Shore Trail Camp	M7	Public/State	10	Section of statewide Shore to Shore Equestrian Trail	Statewide	1
Bass Lake Access	M8	Public/State	2.09	Boat access, swimming	Neighborhood	1
Bass Lake Commons	P1	Private	2	Lake access	Neighborhood	1
Bass Lake Girl Scout Camp	P2	Private	400	Restrooms, parking area, playground, pavilion, volleyball, picnic area, camping	Statewide	1
Interlochen Golf Course	P3	Private	31.11	18 hole golf course, driving range, bar/restaurant	Statewide	1
Cycle Moore, Inc.	P4	Private	2	Camping, showers, picnic area for motorcyclists	Statewide	1
Duck Lake Access	P5	Private	0.5	Boat access	Neighborhood	1
Interlochen Center for the Arts	P6	Private	42.44	Tennis Courts (2), beaches, boat access, gym, picnic areas, concert halls	International	1
Lochenwood Resort	P7	Private	0.5	Miniature golf, dairy bar	Grand Traverse/Benzie	1
Interlochen Elementary School	S1	School* currently vacant/unused	10.68	Playground, gym, outdoor basketball	Township	1
Bicentennial Park	T1	Public/Township	0.5	Memorial site, no other recreational improvements	Township	1



GREEN LAKE TOWNSHIP RECREATION PLAN 2017

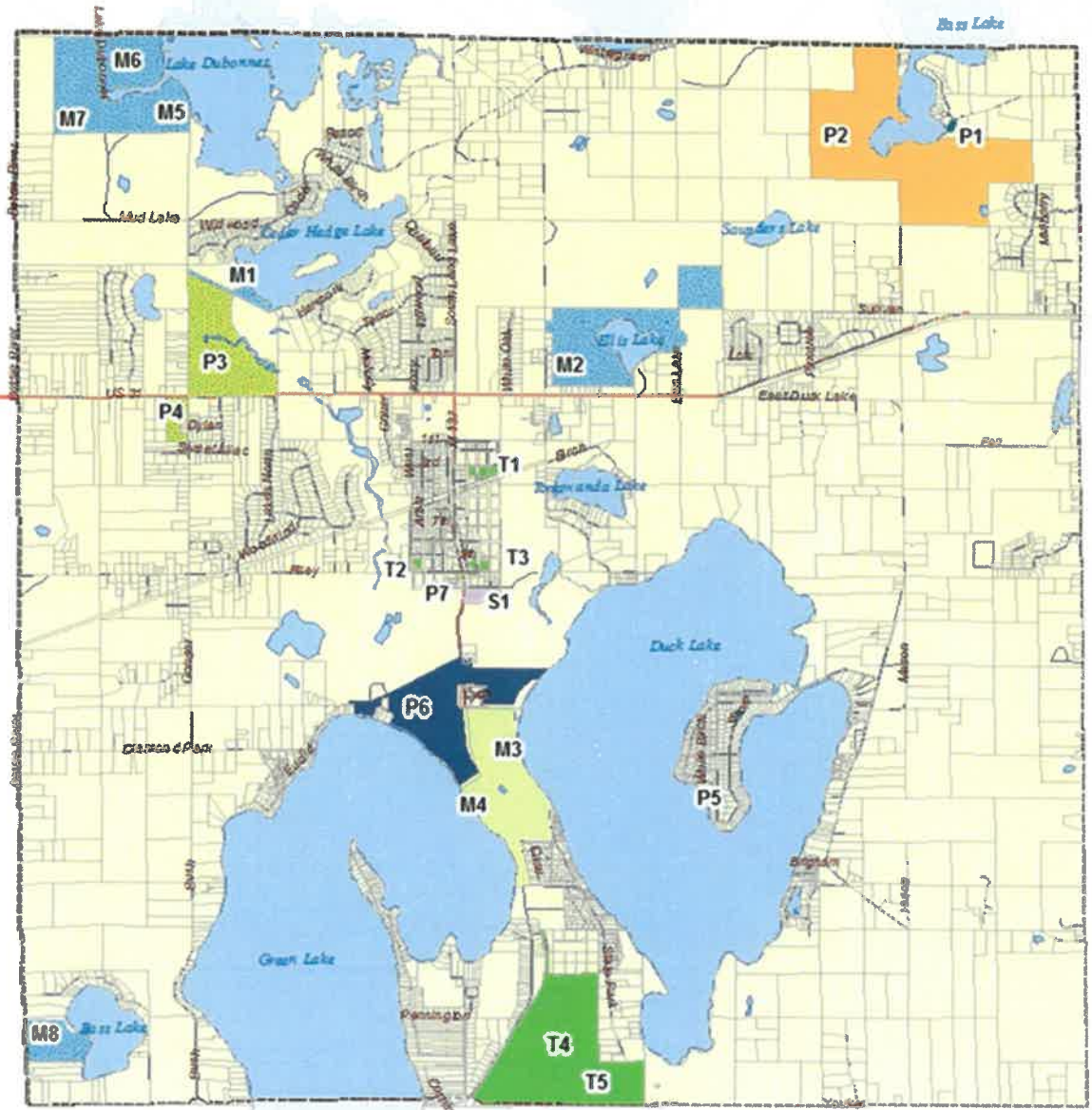
Facility Name	Map Key	Ownership	Size/ Acres	Description	Service Area	Access Rating
Community Center & Library	T2	Public/Township	4.4	Parking, indoor senior center and library	Township	3
Green Lake Township Hall	T3	Public/Township	4.55	Meeting hall, parking, former site of winter outdoor ice skating rink	Township	1
Memorial Park	T4	Public/Township	15	Restrooms, parking area (100 spaces), playground, pavilion, volleyball, picnic area, baseball/softball, soccer fields	Township	1
Intetlochen Airfield	T5	Public/Township	276	Two hangars, tie down area	Statewide	1



Map 4 Recreation Inventory

Green Lake Township Recreation Plan

- | | |
|-------------------------------|---------------------------------|
| Private Lake Access | Interlochen Center for the Arts |
| Private Campground | Public Schools |
| Public Lake Access (State) | Township Facilities & Parkland |
| Private Commercial Recreation | State Parks |





Accessibility Analysis

Table 2 (above) also lists an accessibility rating for each recreation facility in the Township. Most of the facilities do not meet accessibility guidelines. Following is a summary of a scoring system generally in accordance with MDNR standards.

- Level 1. None of the facilities in the park meet accessibility guidelines. Little pavement is provided and access routes to the facilities are not easily accessible.
- Level 2. Some of the facilities meet accessibility guidelines, but many of the facilities or the access routes to them are not easily accessible.
- Level 3. Most of the facilities meet accessibility guidelines. Parking areas and walkways are paved; and while most facilities are generally accessible, some barriers may exist for certain people because of age, ability or situation.
- Level 4. All of the facilities meet accessibility guidelines. The park is accessible and the routes to facilities within the park are accessible, but some play or other equipment may not be designed for everyone.
- Level 5. Universal design guidelines were used to design the entire park.

Recreation Facility Analysis

Based on the following analysis of the available Township and area recreation facilities compared to standards, most recreation needs are met for Green Lake Township residents. Some potential shortfalls include:

- Upgrade basketball courts in Memorial park to accommodate both adult and youth size basketball courts/hoops, and potentially add a second adult/youth court elsewhere in the Township
- Up to 4 tennis courts needed for public use in the Township; consider striping for pickle ball use
- Development of a field hockey field may be warranted in the Township
- Although the region's needs appear to be met for soccer fields, additional fields may be warranted if room is available at Memorial Park (potentially multi-use field to accommodate lacrosse and other field sports as well)



- Multiple use recreation court (basketball, volleyball, tennis) is warranted for Memorial Park or Township hall site
- Connections to regional trails should be sought
- The region may be underserved for indoor skeet shooting and indoor swimming pool facilities. Not necessarily warranted for these facilities to be located in Green Lake Township.

Table 3

Inventory Comparison to Guidelines

	Facility Standard per Population	Recommended for Green Lake	Existing Facility	Standard Met?	Comments
Badminton	1/5,000	1-2	No designated courts known in area	No	Fields and courts available in Memorial Park for informal use
Basketball	1/5,000	1-2	2 courts in Memorial Park	Yes	Should provide for both youth and adult court facilities within Township
Handball	1/20,000	1 for area	Several courts at GT Bay YMCA facility	Yes	
Ice Hockey	1/100,000 (indoor)	1 for region	Center Ice Howe (Civic Center)	Yes	Several area public outdoor rinks have been eliminated recently including the Green Lake and Long Lake Township facilities
Tennis	1/2,000	3-4	No public courts in Township (2 private courts at ICA)	No	Several courts area warranted to serve the Township's population
Volleyball	1/5,000	1-2	2 courts available at Memorial Park and at State Park	Yes	
Baseball	1/5,000	1-2	4 softball/baseball fields at Memorial Park, additional fields in Blair and Long Lake Townships	Yes	Lighting of fields may be warranted to allow for extended use of fields
Field Hockey	1/20,000	1 for area	No known area public fields	No	
Football	1/20,000	1 for area	5 fields serving region (Thirby Field, West Senior High, East Middle School, West Middle School, NMC)	Yes	
Soccer	1/10,000	2 for area	Regional facilities such as Keystone soccer complex have 15 fields. Area fields include Long Lake (2	Yes	There is available land within Memorial Park for additional fields if necessary



	Facility Standard per Population	Recommended for Green Lake	Existing Facility	Standard Met?	Comments
			fields), GT Bay YMCA, West Middle School		
Golf-Driving Range	1/50,000	1-2 for region	Interlochen Golf Course has a driving range, several more in the region	Yes	
¼ Mile Running Track	1/20,000	1 for area	Several in region at TCAPS facilities	Yes	
Softball	1/5,000	1-2	4 softball/baseball fields in Memorial Park	Yes	
Multiple Recreation Court	1/10,000	2 for area	None in Township	No	Recommended for Memorial Park and/or Township Hall site
Trails	1 system per region	1 for region	5 regional trail systems in the region	Yes	Recommended connections to regional trails in Green Lake Township
Archery Range	1/50,000	1-2 for region	1 private indoor facility in Blair Township	Yes	
Combination Skeet and Trap	1/50,000	1-2 for region	None known in region	No	
Golf Par 3 9 Hole 18 Hole	n/a 1/25,000 1/50,000	1 for area 1 for region	Interlochen Golf Course includes an 18 hole course	Yes	
Swimming Pool	1/20,000	1 for area	Easling Pool, YMCA West	No	
Beach Area	½ - 1 hour travel time		Beach in State Park and several more within 1 hour drive	Yes	

Grant History

Green Lake Township has received one state recreation grant. This grant was received in 1976 in the amount of \$4,837 for acquisition of 2.4 acres of land for Bicentennial Park in the Interlochen village area (LWCF grant number 26-00760). The Township is working toward rectifying an unintended conversion of a portion of the park obtained through this grant.



DESCRIPTION OF PLANNING AND PUBLIC INPUT PROCESS

Planning Process

Many guidelines have been developed to determine the types of recreation facilities that are needed for a specific population, as well as to specify locations and land area needed for recreation purposes. Typically, in planning a system of interrelated areas and facilities, each type of geographic area, neighborhood, community, regional, or state must be considered. Further, opportunities that encompass both active and passive types of recreation should be provided.

Recreation areas and facilities discussed within the context of this study are principally limited to neighborhood and community to be owned and/or operated by Green Lake Township. County, regional, and state facilities, which are provided and financed on a county-wide or state-wide basis, are beyond the scope of this report except when determining whether facilities standards are being met. Mini-parks are also not considered since Green Lake Township is primarily single-family residential community, outside of the Village of Interlochen, where private yard spaces meet the play space needs of young children.

Certain other recreational facilities, such as golf courses and amusement parks are generally provided on a commercial basis in response to general public interests. Therefore, these facilities and others like them are not addressed by this study since the Township would not have control over their operation.

The planning process of this Plan combines features of both the Comparison to Recreation Standards and the Systems Approach to Planning approaches. Members of Green Lake Township's Parks and Recreation Committee, with input received at community input sessions and opinion surveys, reviewed the Suggested Facility Development Standards recommended in the MDNR Plan Guidelines to identify Activities/Facilities that are important to residents of the Township. The existing Activities/Facilities available in Green Lake Township were then listed and compared to recommended standards and notes were made as to other ways the standards might be met through outside resources.



It is important to note when describing the public input process followed to develop this Plan that the Township's Parks & Recreation Committee, the advisory committee to the Board that makes the final decisions, consists primarily of interested community members who have volunteered to serve and were then appointed to their positions.

Public Input

Every section of this Plan was reviewed by the Parks & Recreation Committee, including the detailed accuracy of the Recreation Inventory.

An online questionnaire was made available to the public. Community members were encouraged to complete this survey through the Township-wide newsletter, on the Township's website, through emails sent to several interest groups. Hard copies of the updated survey were also available at Township hall and at the Interlochen Library and the Interlochen post office. The Action Plan was developed based on the input from the results of the survey and at all other public meetings.

After the draft plan was finalized by the Recreation Committee. The draft plan was available for public scrutiny beginning on _____. The plan was available for inspection at the Interlochen Library, Township hall, and on the Township's webpage. The Planning Commission reviewed and commented on the draft plan at their _____ meeting. A public hearing, noticed in the local newspaper used for all Township notices, was held by the Township Board on _____, at which time the Board passed a resolution adopting the 20____ Green Lake Township Recreation Plan.



Summary of Questionnaire Results

Some of the most significant results of the 2016 questionnaire were very consistent from a recreation questionnaire performed in 2010

- All around, development of pathways and trails – for walking, running, hiking, and biking -- was the highest ranking priority.
- Within Memorial Park, responders reported that the areas most in need of improvement are bathrooms, the playground, better lighting, gazebo, picnic areas, and landscaping.
- Responders showed the least support for improved parking, soccer and baseball fields at Memorial Park.
- Responders showed the most support for the following new facilities at Memorial Park: disc golf, tennis, splash pad, and horseshoe pit.



GOALS

The following recreation goals were developed by the Recreation Committee based on the outcome of public input and based on their understanding of the community and its residents. The Action Plan is informed by and reflects these goals.

Goal 1: To provide safe and convenient recreation opportunities to all residents of Green Lake Township, of all ages from preschool to seniors, and including all levels of physical ability;

Goal 2: To provide a variety of recreation opportunities including active, passive, and non-traditional recreation, such as the community library and senior center;

Goal 3: To fully utilize available public, private and volunteer resources where possible to minimize local public expenditures and maximize recreation opportunities for the residents of Green Lake Township;

Goal 4: To protect sensitive natural areas and ground and surface water quality;

Goal 5: To develop recreation facilities that promote economic development benefits to the community.

Objective 1: Strategically plan for and develop trail head parking, bike parking, transit stops, and similar transition points to provide linkages to recreation resources and other destination points.

Objective 2: Assist in the development of local connections in cooperation with regional snowmobile networks by forging and sustaining relationships with regional snowmobile organizations.

Objective 3: Acquire properties adjacent to existing parks and recreation areas, when available, to preserve recreational opportunities during growth of the community;



Objective 4: Develop recreation facilities that promote and strengthen the Village of Interlochen that might include small neighborhood parks, pedestrian/bike trails, and picnic areas;

Objective 5: To provide a system of multi-modal trailways, pathways, bike lanes, and water trail systems within the Township; and to provide access to a regional trail system to expand recreational opportunities.

Objective 6: To provide enhanced access to water resources in the Township for a wider component of the community.

Objective 7: Maintain and enhance Memorial Park.

Objective 8: Acquire parkland that will allow the development of community parks.

Action 1: Acquire and develop a kayak/canoe launch as part of a regional water trail.

Action 2: Develop Bicentennial Park with amenities such as bird/wildlife viewing platform, tennis/pickleball courts, trail connections, and other amenities.

Action 3: Develop a trailway/bikepath plan, community-wide and in cooperation with adjacent communities where practical.

Action 4: Develop a park master plan for Memorial Park and implement as funding is available.

Action 5: Coordinate community outreach to promote community parks and to reaffirm rules and expected conduct at Township facilities especially Memorial Park and the airfield.

Action 6: Develop recreation facilities as part of the expansion and enhancement of the governmental center in the village of Interlochen

Action 7: Develop a safe pedestrian way along M-137 to connect residents, students and campers from ICA, visitors to Interlochen State Park, and others to the village of Interlochen.



Action 8: If the Bass Lake Girl Scout Camp becomes defunct, work with partner groups to maintain a private or public recreation asset for the community at this location.



ACTION PROGRAM

Table 6

Proposed Recreation Projects

Improvement Project and Location	Priority	Estimated Cost	Expected Completion	Potential Funding Sources
Development of a local trail system to include a bike lane/path along M-137, and connecting to other bike lanes/paths and activity centers, and preliminary trailway planning	High	\$500,000- \$700,000	2022	MDNR grants, Interlochen DDA, MDOT Enhancement Grants, General Fund, Private Institutions (ICA)
Continued work with regional trail associations to secure easements for Green Lake links to future regional trail/MDNR rail-trail connections	Medium	< \$2,000	Ongoing	Trail organizations, property owners (in kind)
Memorial Park improvements to include a second pavilion, improved or new restrooms, multi-use courts, tennis/pickle ball courts, security improvements, development of a multi-use practice field, expansion of pedestrian trails, landscaping and naturalization improvements, disc golf, and accessibility improvements	High/ Medium	\$200,000- \$500,000	2019	MDNR grants, General Fund, Memorial Fund, Rotary Charities, Olsen Foundation
Township Hall Site Improvements to include playground, multi-use courts or tennis/pickleball courts, pathway, seating area, trail head and parking, and gardens	High/ Medium	\$200,000 - \$300,000	2020	MDNR grants, General Fund, Rotary Charities, User Fees (Skating Rink), TCAPS (shared facilities with school to be rebuilt)



Improvement Project and Location	Priority	Estimated Cost	Expected Completion	Potential Funding Sources
Bicentennial Park Improvements to include tennis courts, bird/wildlife viewing platforms, parking, trail connections and other improvements	Medium/ Low	\$100,000- \$300,000	2021	Passport/MDNR grants, General Fund, local foundations/ organizations
Placemaking in Interlochen Village to include recreation-related projects from the Village plan documents such as sculpture parks, off road trail leading to the ICA and State Park with bike staging & seating area, public performance spaces & public art	High	Varies	Varies	MDNR grants, General Fund, User Fees (artists), in kind use of property from business owners, in kind partnership with ICA
Property Acquisition as opportunities become available to <ul style="list-style-type: none"> • provide access to the community’s waterways (navigable streams or rivers), • locations for special recreation opportunities (sledding hill location), • or to protect a high quality natural resource for enjoyment by the public 	Medium/ Low	Variable	Ongoing	MDNR grants, property owners (in kind), general fund

Potential acquisition properties include

- Strip of land along M-137 owned by the Interlochen Center for the Arts
- Land near the Golden Fellowship hall/Riley Road for a canoe launch site
- Bass Lake Girl Scout campground



APPENDIX A

Location Maps for Recreation Facilities in Green Lake Township



APPENDIX B Summary of Recreation Survey Responses (mid-2016)



APPENDIX C

Transmittals

Copy of Notices

Copy of Signed Resolution of Adoption

Copy of Minutes of Township Board Meeting Adopting Plan

Copy of Survey Forms